



EVANSVILLE METROPOLITAN PLANNING ORGANIZATION POLICY COMMITTEE MINUTES

Regular meeting held at 4:00 p.m. in Room 301
Civic Center Complex – Administration Building
Evansville, Indiana

January 10, 2019

The following are minutes and not intended to be a verbatim transcript. An audio version of the proceedings can be heard or viewed on our website at www.evansvillempo.com.

ROLL CALL

Members Present (voting):

Jack Corn, Mayor Lloyd Winnecke, Todd Robertson, Jeff Hatfield, William “Buzzy” Newman, Dan Saylor, Rusty Fowler, Deneatra Henderson, Angela Koehler Lindsey, William “Bill” Hubiak

Members Absent (voting):

Dr. H. Dan Adams, Michael Lockard, Christy Powell

Members Absent (non-voting):

Joe McGuinness, Mayela Sosa, Shawn Seals, Marisol Simon, Robert Dirks, Krishina Green, Thomas Nelson, Jr., Bernadette Dupont, Greg Thomas, Amanda Spencer, Leslie Poff

Evansville MPO Staff Present:

Seyed Shokouhzadeh, Pam Drach, Erin Schrieffer, Matt Schrieffer, Amir Varshochi, Xinbo Mi, Kari Akin

Others Present:

Brian Aldridge, Bobby Howard, Don Gibbs

Jack Corn directed the meeting.

NEW MEMBER INTRODUCTION

Jeff Hatfield, Vanderburgh County Commissioner, was introduced as a member of the Policy Committee, replacing Bruce Ungethiem.

1. APPROVAL OF MINUTES

Mayor Lloyd Winnecke made a motion for approval and Dan Saylor seconded the motion; motion carried.

2. OLD BUSINESS

A. Project Update- presented by Pam Drach

VANDERBURGH COUNTY

Columbia-Delaware Bridge over Pigeon Creek: Proposals for Construction Inspection are under review.

INDOT

US Highway 41-Fix for 41: I-69 Interchange to Ohio River Bridge: The entrance ramp for the SB US 41 from Veterans Memorial Parkway and Kentucky Ave. is closed. Access to Waterworks Rd. remains a right in/right out movement. All traffic, both northbound and southbound lanes are on the reconstructed northbound US 41 lanes. With traffic in this configuration, it allows for work to remove bridge decks and cut out the pavement replacement portion of the southbound side of US 41. This work will continue through the winter.

I-69 Corridor

I-69 Ohio River Crossing: The Draft Environmental Impact Statement (DEIS) was published in December 2018. Public hearings were held on January 7 & 8, 2019 to gather input on the preferred alternatives. Community Conversations were scheduled for January 23 and 24, 2019 as an opportunity to learn more about the alternatives and provide input to the Project Team.

This item was informational and did not require a committee action.

B. I-69 Ohio River Crossing Preferred Alternatives– presented by Brian Aldridge (Stantec)

ORX 69 Ohio River Crossing: Brian Aldridge from Stantec went through updates regarding the Preferred Alternatives for I-69 Ohio River Crossing (Central Alternatives 1A and 1B: Two Tolling Options). More information can be found in the attached document. The full presentation can be heard online at evansvillempo.com/meetings.html.

Mayor Lloyd Winnecke thanked INDOT, KYTC, and the outside consultants for their phenomenal work on this project. Mayor Winnecke went on to mention that at the Evansville public meeting, he, along with many others of the community, supported Alternative 1B where the US 41 bridge remains toll-free. The Mayor then mentioned that a new aspect of having both US 41 bridges remain open was discussed at the public meeting. By having both bridges, farmers in the area would have better access to fields. The Mayor concluded by stating this is a major milestone for the area and again congratulated the parties involved in getting to this point.

3. NEW BUSINESS

A. Transportation Conformity Document: MTP 2040 & FY 2018-2021 TIP – presented by Pam Drach

Transportation conformity is being established for the Metropolitan Transportation Plan (MTP) 2040 and the FY 2018-2021 Transportation Improvement Program (TIP). The conformity is needed as a result of a recent decision from the US Court of Appeals for the District of Columbia Circuit in South Coast Air Quality Mgmt. District v. EPA, which struck down portions of the 2008 Ozone standards State Implementation Plan Requirements Rule concerning the ozone standards as well as the anti-backsliding requirements associated with the revocation of the 1997 Ozone standards.

Areas such as Vanderburgh and Warrick counties that were maintenance areas for the 1997 Ozone standards at the time of revocation and are designated as attainment for the 2008 Ozone standards, have not been required to make transportation conformity determinations for any Ozone since the 1997 Ozone standards were revoked in April 2015. Under the recent court decision, our area, referred to as orphan area, is required to establish a new regional conformity determination.

As no regional emissions analysis is required, there is no requirement to use the latest emissions model, or use either the emissions budget test or interim emissions test. Therefore, transportation conformity can be demonstrated by showing that the remaining criteria in the regulations have been met. Those remaining criteria are:

1. the use of latest planning assumptions,
2. consultation requirements,
3. timely implementation of traffic control measures (TCMs), and
4. fiscal constraint. Our conformity determination document concludes that the MTP 2040 and the FY 2018 – 2021 TIP satisfy the applicable criteria and procedures in the U.S. EPA guidance.

Buzzy Newman made a motion for approval and Bill Hubiak seconded the motion; motion carried.

B. FY 2018-2021 TIP Modifications – presented by Pam Drach

The Evansville MPO has processed the following administrative modifications to the FY 2018-2021 Transportation Improvement Program:

The Kentucky Transportation Cabinet (KYTC) requested the following modifications:

Item# 02-913.00 US 41: Installation of high friction surface on the US 41 north of the US 60 interchange (MP 16 to MP 16.4), (Grouped Project: Pavement resurfacing, restoration, and rehabilitation projects) Add Construction (CN) in FY 2019. CN costs of \$220,000 will be funded with \$220,000 federal HSIP, toll credits in lieu of State match.

This item was informational and did not require a committee action.

C. Draft FY 2020-2024 Program of Projects – presented by Pam Drach

The Evansville MPO has completed a draft project list for the fiscal year 2020-2024 TIP. Working cooperatively with state and local partners, the draft program of projects documents transportation projects for the next five years in the MPO planning area.

The MPO requested that Technical and Policy Members review and provide comments of the draft program of projects for the 2020-2024 TIP by January 24, 2019. (The draft program of projects is attached at the end of the minutes.)

This item was informational and did not require a committee action.

4. OTHER BUSINESS

A. Approval of Bills

Mayor Lloyd Winnecke made a motion for approval and Angela Koehler Lindsey seconded the motion; motion carried.

5. PUBLIC COMMENTS

Jack Corn announced that Officers will be elected at the February Policy meeting.

Meeting adjourned.

Preferred Alternatives

Central Alternatives 1A and 1B: Two Tolling Options



The Central Alternative is the preferred route for the proposed I-69 Ohio River Crossing. It includes a 4-lane I-69 bridge and retains one US 41 bridge.

Central Alternative 1A

- Toll both I-69 bridge and remaining US 41 bridge

Central Alternative 1B

- Toll only the I-69 bridge

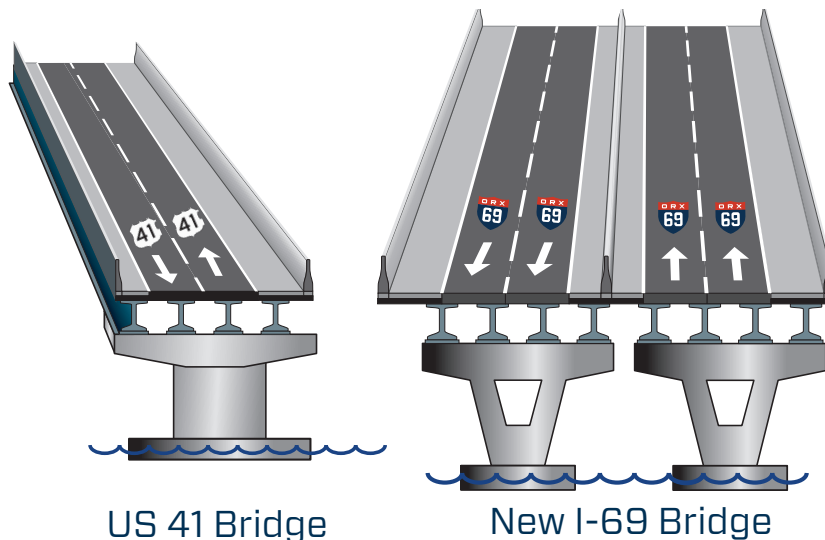
The tolling options are the only difference.

Central Alternatives 1A and 1B

- Build 4-lane I-69 bridge
- US 41 northbound bridge retained for two-way, local traffic
- 11.2 miles of new interstate
 - 8.4 miles of I-69 on new location
 - 2.8 miles of improvements to existing US 41 to meet interstate standards
- New interchanges
 - At existing I-69 in Indiana
 - At US 60
 - At existing US 41 south of Henderson between Van Wyk Rd. and Kimsey Ln.
- Improvements to three existing interchanges

Basis for Selection of Preferred

- Fewest residential relocations (four relocations)
- No commercial relocations
- Cross-river redundancy
- Lowest total cost
- Fewest impacts to many sensitive natural resources:
 - Wetlands
 - Floodways
 - Managed lands
 - Streams



Estimated Cost: \$1.497 billion*

\$200 million = Design, Right of Way, Mitigation, Procurement, Construction Inspection

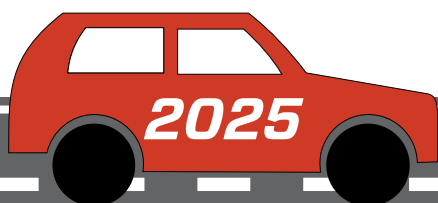
\$807 million = Construction Cost, 2017 \$
(Includes Roadway, Bridge, Toll System, Utilities)

\$255 million = Construction Inflation
(Year-of-Expenditure dollars)

\$234 million = Roadway and Bridge Operations and Maintenance (O&M) (35 years)



*Year-of-expenditure dollars. Also includes roadway and bridge operations for 35-years following completion of construction.



Central Alternative 1A or 1B could open to traffic as soon as 2025, assuming funding is identified soon after the Record of Decision.

Financial Feasibility

Financial feasibility is key to moving to construction. There was a similar environmental study in 2004 that identified a preferred alternative for an I-69 Ohio River Crossing, but it never reached a Record of Decision. No funding source was identified and the project stalled.

Traffic forecasts indicate six lanes of cross-river capacity are needed through 2045.

Providing more than six lanes of traffic would unnecessarily add to long-term operations and maintenance costs associated with major river crossings.

\$145 million is saved by removing one of the aging US 41 bridges from service.

Reducing project costs provides the greatest opportunity for the project to be financially feasible.

A new I-69 bridge will be wide enough to accommodate six lanes in the future, if needed.

Retaining US 41 Northbound Bridge

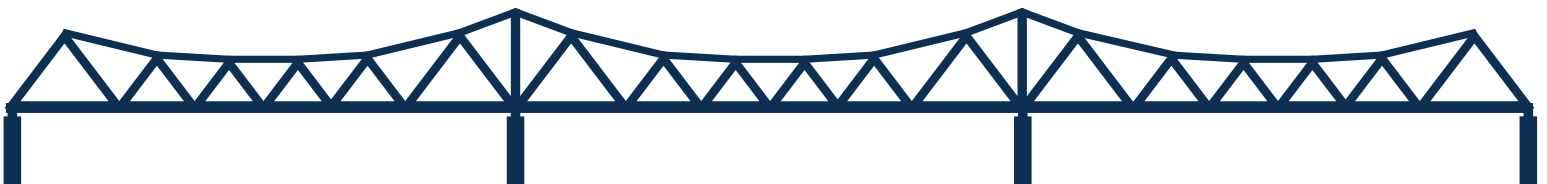
Because of its historic significance, the US 41 northbound bridge will be retained for two-way, local traffic.

The northbound bridge, which opened in 1932, has historic significance because of both the way it was constructed and funded.

The southbound bridge, which opened in 1965, is only considered historic because of the “twin” northbound bridge.

Both US 41 Bridges

- Can carry a lane of traffic in each direction
- Have similar costs to rehabilitate
- Provide cross-river redundancy
- Have similar costs to maintain



Financing and Funding

The decision on whether to recommend Central Alternative 1A or Central Alternative 1B will be based on continuing financial analysis, federal grant availability and comments received on the DEIS.

 Toll-backed financing

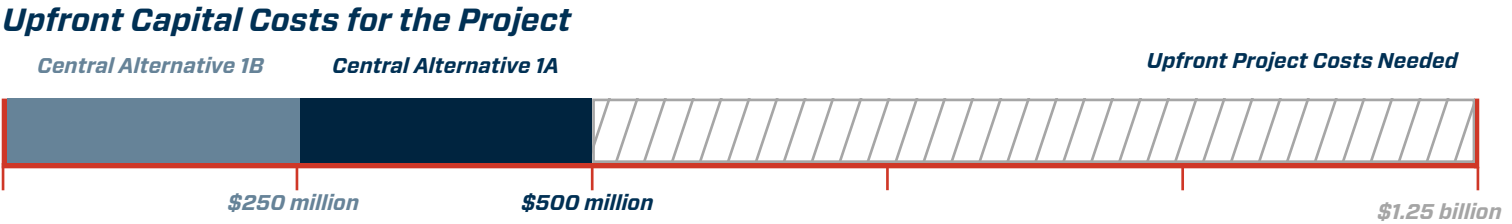
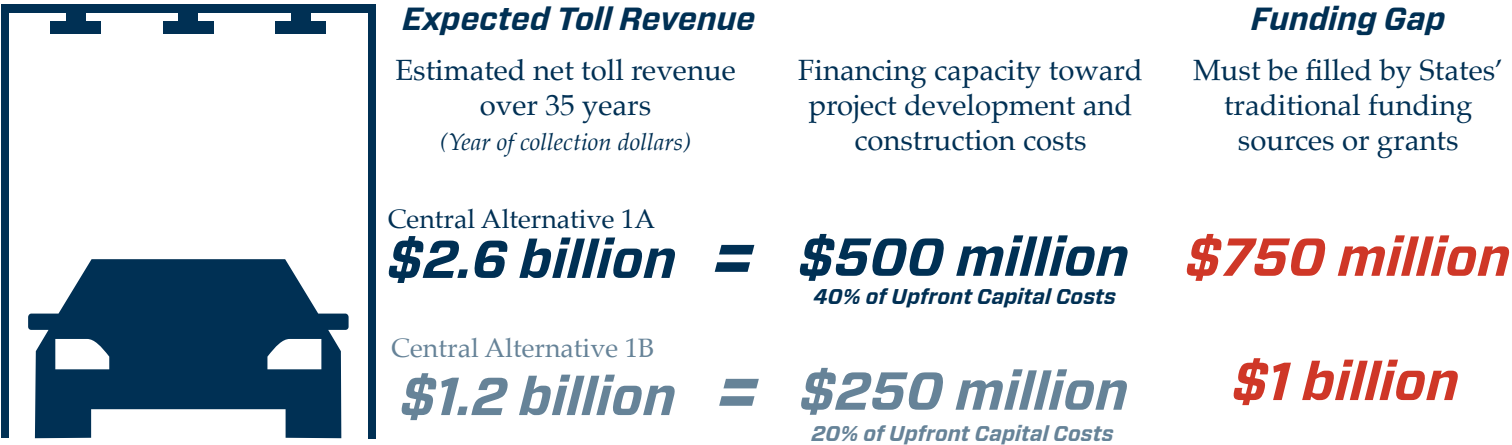
 Traditional funds

 + Available grant opportunities

The states will pursue grants and opportunities to reduce the amount of toll revenue and traditional funds needed. A decision on whether the US 41 bridge will be tolled will be made after additional financial studies and pursuit of funding opportunities.

Once a decision is reached, the public and agencies will be notified prior to publication of the Final Environmental Impact Statement (FEIS) and Record of Decision (ROD).

Toll revenue will be used to cover capital costs, debt service for the project and operations and maintenance of the project. Tolls will not cover all project costs.



- A bi-state body will establish toll policy (including rates) before construction begins.
- Tolling will be all-electronic tolling with no slowing and no stopping.
- Drivers with prepaid accounts and transponders will pay the lowest rates.

Possible Tolling Mitigation Strategies for EJ Populations if US 41 Bridge is Tolled

- Option of transponder purchase with cash
- Option to load transponders with cash
- Widespread availability of transponders

- Frequent-user/commuter card
- A reduced toll rate for verified low-income users on US 41 bridge

(EJ = Environmental Justice = low-income or minority populations)

Draft Environmental Impact Statement (DEIS)

The DEIS summarizes the I-69 Ohio River Crossing project's study process, analysis and findings. It includes the basis for the selection of the preferred alternatives and mitigation measures proposed to address unavoidable impacts associated with the preferred alternatives.



• **Posted at I69ohiorivercrossing.com/DEIS**

**Copies available at several locations •
(complete list at I69ohiorivercrossing.com)**



Comments can be made:

**At public
hearings**

On Contact Us page
I69ohiorivercrossing.com

By email
info@I69ohiorivercrossing.com

By mail
(project office)

In person
(project office)



Office Hours During the Comment Period

Evansville office: Mondays, Tuesdays and Thursdays
320 Eagle Crest Dr., Ste. C, Evansville, IN 47715
8 a.m. to 5 p.m. and by appointment

Henderson office: Tuesdays, Wednesdays and Fridays
1970 Barrett Ct., Ste. 100, Henderson, KY 42420
8 a.m. to 5 p.m. and by appointment

(Project offices will be closed Dec. 24 – Jan. 1.)

Henderson

Monday, Jan. 7

Henderson Community College
Preston Arts Center
2660 S. Green St.

Public Hearings

5 to 8 p.m.

Presentation at 6 p.m.

Evansville

Tuesday, Jan. 8

Old National Events Plaza
Locust meeting rooms
715 Locust St.

Speakers can sign up at either hearing, and all comments will be recorded. Written comments can also be submitted.

**Now –
Feb. 8, 2019**

*Public comment
period to gather
feedback on the
DEIS*

2019

- Project Team considers all comments
- States pursue grant opportunities
- Refine tolling needs
- Bi-state coordination
- Development of financial plan

Late 2019

*Final Environmental Impact
Statement (FEIS) = States
confirm the preferred alternative*

*Record of Decision (ROD) =
Federal Highway Administration's
final approval of preferred
alternative*

The ROD allows the states, with the help of available federal funds, to move forward with design, land purchases and construction.

Sponsor: Evansville MPO											
Project Des#	Federal Funding Source	Amendment/ Modification Date	Phase	All amounts in thousands					Planning/ Cost to Complete	Federal Share	Local Share
				2020	2021	2022	2023	2024			
HSIP UPWP Planning Activities	HSIP		PE	\$100	\$100	\$100	\$100	\$100		\$ 500	\$ -
Various	Includes Des#										
STBG UPWP Planning Activities	STBG		PE	\$149	\$125	\$125	\$125	\$125		\$ 519	\$ 130
Various by FY	Includes Des#										
			PE	\$ 249	\$ 225	\$ 225	\$ 225	\$ 225	\$ -	\$ 1,019	\$ 130
Total				\$ 249	\$ 225	\$ 225	\$ 225	\$ 225	\$ -	\$ 1,019	\$ 130
Federal				\$ 219	\$ 200	\$ 200	\$ 200	\$ 200	\$ -	\$ 1,019	
Local				\$ 30	\$ 25	\$ 25	\$ 25	\$ 25	\$ -	\$	\$ 130

DRAFT

Sponsor: Indiana Department of Transportation													
Route		Project Limits		Map ID Amendment/ Modification Date	Phase	All amounts in thousands				Planning/ Cost to Complete	Federal Share	State Share	
Des# Length:	Planning Reference Federal Funding Source						2020	2021	2022				2023
Description:													
Vanderburgh County													
US 41	Intersection with Hillisdale Rd., 2.04 mi. N of SR 57			PE						\$	-	\$	-
1400005				RW						\$	-	\$	-
0.105 mi.	NHPP			CN	\$2,206					\$	1,765	\$	441
Contract 37845; Intersection improvement project													
SR 62	Over CSX RR, 4.19 mi. W of US 41			PE						\$	-	\$	-
1500041				RW						\$	-	\$	-
n/a	NHPP			CN	\$11,040					\$	8,832	\$	2,208
Contract 38710; Bridge replacement. Includes SR 62 over Carpenter Creek, 4.43 mi. W of US 41; SR 62 over Over Tekoppel Ave., 4.09 mi. W of US 41													
SR 66	Intersection with Green River Rd., 2.2 mi. W of I-69			PE						\$	-	\$	-
1601009				RW						\$	-	\$	-
n/a	NHPP			CN	\$13	\$185				\$	158	\$	40
Contract 39922; Interchange modification, WB off ramp.													
US 41	Intersection with Lynch Rd., 1.0 mi. N of SR 66			PE						\$	-	\$	-
1601011				RW						\$	-	\$	-
n/a	NHPP			CN	\$15	\$1,336				\$	1,081	\$	270
Contract 39923; Intersection improvement with turn lanes													
SR 62	University Pkwy. bridge over SR 62, 7.5 mi. W of US 41			PE						\$	-	\$	-
1602248				RW						\$	-	\$	-
n/a	NHPP			CN	\$957					\$	766	\$	191
Contract 40075; Bridge thin deck overlay.													
SR 62	Pedestrian Walk at SR 62 EB/WB			PE		\$112				\$	90	\$	22
1702066				RW						\$	-	\$	-
n/a	NHPP			CN		\$2,640				\$	2,112	\$	528
Contract 40560; Bridge replacement													
US 41	Vietnam Gold Star Bridge over Ohio River			PE		\$300				\$	240	\$	60
1702658				RW						\$	-	\$	-
n/a	NHPP			CN						\$	-	\$	-
Contract 40789; Inspection of northbound and southbound Ohio River bridges													
SR 66	Over Little Creek, 1.68 miles W of SR 65			PE						\$	-	\$	-
1592949				RW						\$	-	\$	-
n/a	STBG			CN		\$785				\$	628	\$	157
Contract 41137; Bridge deck overlays on Contract													

Sponsor: Indiana Department of Transportation												
Route		Project Limits		Map ID Amendment/ Modification Date	Phase	All amounts in thousands				Planning/ Cost to Complete	Federal Share	State Share
Des#	Length:	Planning Reference	Federal Funding Source			2020	2021	2022	2023			
Description:												
SR 62	1801127	Over First Ave, RR, Parking, 1.72 mi W of US 41, WBL			PE					\$	-	\$
n/a		NHPP			RW					\$	-	\$
Contract 41167; Bridge thin deck overlay		CN				\$3,071				\$	2,457	\$ 614
US 41	1601066	From N of SR 66/SR 62 (Lloyd Expwy) to 0.74 mi N of SR 66 (Diamond)			PE					\$	-	\$
8.0 mi.		NHPP			RW		\$760			\$	608	\$ 152
Contract 41410; Pavement Replacement		CN					\$21,360			\$	17,088	\$ 4,272
SR 65	1800142	Over I-64 EB/WB lanes, 2.61 mi S of SR 68			PE					\$	-	\$
n/a		STBG			RW					\$	-	\$
Contract 41457; Bridge Replacement, Concrete		CN					\$4,271			\$	3,417	\$ 854
US 41	1601737	Vietnam Gold Star Bridge over Ohio River			PE					\$	-	\$
0.945 mi.		NHPP			RW					\$	-	\$
No Contract Number; State police additional patrols for "Fix For 41" project		CN				\$70				\$	56	\$ 14
Various locations	1802984	Various locations throughout the State			PE					\$	-	\$
n/a		HSIP			RW					\$	-	\$
Contract 41864; Intersection improvement - Statewide Rural Intersection Conflict Warning System (RICWS)		CN				\$3,000				\$	2,700	\$ 300
SR 62	1702066	Pedestrian Bridge west of St Joseph Avenue			PE		\$112			\$	90	\$ 22
n/a		STBG			RW		\$2,640			\$	-	\$
Contract 40560; Bridge replacement		CN								\$	2,112	\$ 528
SR 62, SR 66	Various	Various locations			PE					\$	-	\$
n/a		STBG			RW					\$	-	\$
Contract 41167; Bridge thin deck overlays on contract		CN				\$3,071				\$	2,457	\$ 614
I-64	1601990	From 0.6 mi. W of SR 165 to 3.32 mi. E fo SR 65.			PE					\$	-	\$
9.652 mi.		NHPP			RW					\$	-	\$
Contract 40042; Pavement, hot mix asphalt overlay, preventive maintenance.		CN				\$7,596				\$	6,836	\$ 760

DRAFT

Sponsor: Indiana Department of Transportation												
Route Des# Length: Description:	Project Limits		Map ID Amendment/ Modification Date	Phase	All amounts in thousands				Planning/ Cost to Complete	Federal Share	State Share	
	Planning Reference Federal Funding Source				2020	2021	2022	2023				2024
Warrick County												
SR 68	0.08 mi. W of SR 61			PE					\$	-	\$	
1400157				RW					\$	-	\$	
n/a	STBG			CN	\$310				\$	248	\$ 62	
Contract 38721; Small structure replacement.												
I-64	Over Plum Creek, 3.92 mi W of SR 61, EBL & WBL			PE					\$	-	\$	
1593068				RW					\$	-	\$	
n/a	NHPP			CN			\$3,646		\$	3,281	\$ 365	
Contract 39367; Replace Superstructure.												
SR 61	Various Locations			PE					\$	-	\$	
1592969				RW					\$	-	\$	
	STBG			CN	\$1,762				\$	1,410	\$ 352	
Contract 39377; HMA Overlay, preventative maintenance.												
SR 161	From E jct with SR 62 to W jct with SR 68			PE					\$	-	\$	
1592941				RW					\$	-	\$	
10.129 mi.	STBG			CN	\$4,047				\$	3,238	\$ 809	
Contract 39380; Pavement HMA Overlay, structural.												
SR 68	Over Pigeon Creek Overflow, 2.08 mi. E of SR 57			PE					\$	-	\$	
1593067				RW					\$	-	\$	
n/a	STBG			CN		\$2,011			\$	1,609	\$ 402	
Contract 39418; Bridge replacement, other construction												
SR 66	0.16 mi. E of I-69 at Epworth Rd.			PE					\$	-	\$	
1400195				RW					\$	-	\$	
1.081 mi.	NHPP			CN	\$175	\$3,910			\$	3,268	\$ 817	
Contract 39921; Other intersection improvement												
SR 68	Over Old Pigeon Creek, 1.56 mi. E of SR 57			PE					\$	-	\$	
1602256				RW					\$	-	\$	
n/a	STBG			CN	\$3,286				\$	2,629	\$ 657	
Contract 40051; Bridge thin deck overlay.												
SR 68	Over Wallace Creek, 0.95 mi E of SR 161			PE					\$	-	\$	
1700167				RW	\$30		\$829		\$	24	\$ 6	
n/a	STBG			CN					\$	663	\$ 166	
Contract 40541; Bridge replacement												

Sponsor: Indiana Department of Transportation											
Route	Project Limits		Map ID Amendment/ Modification Date	Phase	All amounts in thousands				Planning/ Cost to Complete	Federal Share	State Share
Des# Length: Description:	Planning Reference Federal Funding Source				2020	2021	2022	2023			
SR 161	10.46 mi. N Jct. SR 66			PE						\$ -	\$ -
1700170				RW	\$18					\$ 14	\$ 4
n/a	STBG			CN			\$2,025			\$ 1,620	\$ 405
Contract 40551: Small structure replacement.											
SR 662	From I-69 to Ellerbusch Rd.			PE						\$ -	\$ -
1701206				RW						\$ -	\$ -
1.55 mi.	STBG			CN	\$877					\$ 702	\$ 175
Contract 40626; HMA Overlay, preventative maintenance.											
SR 61	From 0.14 mi S of I-64 to 0.88 mi N of SR-68			PE						\$ -	\$ -
1800176				RW			\$30			\$ 24	\$ 6
0.88	STBG			CN				\$721		\$ 577	\$ 144
Contract 41407; HMA Overlay, preventative maintenance.											
I-64	CCTV Cameras/Detection from SR 69 to Lanesville			PE				\$155		\$ 140	\$ 16
1802047				RW						\$ -	\$ -
n/a	NHPP			CN				\$1,725		\$ 1,553	\$ 173
Contract 41768; ITS Traffic management systems.											
SR 61 & SR 68	Various locations			PE						\$ -	\$ -
Various				RW						\$ -	\$ -
n/a	STBG			CN		\$1,438				\$ 1,150	\$ 288
Contract 41048. Includes locations outside MPO TIP area.											
I-64 & SR 68	Various locations			PE						\$ -	\$ -
Various				RW						\$ -	\$ -
n/a	NHPP, STBG			CN		\$3,258				\$ 2,606	\$ 652
Contract 41059; Includes locations outside MPO TIP area.											
SR 66	From 2.2 mi. E of SR 61 to US 231			PE						\$ -	\$ -
1592783				RW						\$ -	\$ -
15.91 mi.	NHPP			CN	\$6,279					\$ 5,023	\$ 1,256
Contract 39357; Pavement HMA Overlay, preventative maintenance. Includes locations outside EMPO TIP area.											

DRAFT

Sponsor: Indiana Department of Transportation											
Route Des# Length: Description:	Project Limits Planning Reference Federal Funding Source Modification Date	Phase	All amounts in thousands					Planning/ Cost to Complete	Federal Share	State Share	
			2020	2021	2022	2023	2024				
SR 68	4.01 mi W Jct. SR 61	PE							\$	-	\$
1700970		RW							\$	-	\$
n/a	STBG	CN			\$413				\$	330	\$ 83
Contract 38717; Small structure pipe lining. Includes locations outside EMPO TIP area											
Grouped Projects Various											
Various Various locations: See grouped projects summary and table at end of all project listings											
		PE	\$ 224	\$ 300	\$ -	\$ 155	\$ -	\$ -	\$	559	\$ 120
		RW	\$ 48	\$ -	\$ 790	\$ -	\$ -	\$ -	\$	670	\$ 168
		CN	\$ 48,188	\$ 15,563	\$ 5,494	\$ 29,998	\$ 1,725	\$ -	\$	82,371	\$ 18,597
		Total	\$ 48,460	\$ 15,863	\$ 6,284	\$ 30,153	\$ 1,725	\$ -	\$	83,600	\$ 18,885
		Federal	\$ 39,828	\$ 12,690	\$ 5,027	\$ 24,503	\$ 1,553	\$ -	\$	83,600	
		State	\$ 8,632	\$ 3,173	\$ 1,257	\$ 5,651	\$ 173	\$ -	\$		\$ 18,885

DRAFT

Sponsor: City of Evansville											
Route	Project Limits		Map ID Amendment/ Modification Date	Phase	All amounts in thousands				Planning/ Cost to Complete	Federal Share	Local Share
Des#	Planning Reference	Federal Funding Source			2020	2021	2022	2023			
Description:											
City Engineer											
Covert Ave.	US 41 to I-69		PE						\$	-	\$
1383064	MTP 2045: 25-2 (Exempt)		RW						\$	-	\$
5.0 mi.	STP-U/CMAQ/HSIP		CN						\$	3,255	\$ 1,309
Road diet conversion to three lanes and sidewalk improvements											
Second St.	Intersection of Washington Ave		PE						\$	-	\$
1383066			RW						\$	-	\$
n/a	STBG-U		CN				\$1,701		\$	1,097	\$ 604
Intersection and safety improvements.											
Second St.	Intersection of Parrett St./Jefferson Ave.		PE				\$110		\$	88	\$ 22
1801725			RW					\$73	\$	58	\$ 15
n/a	STBG-U/CMAQ		CN						\$	1,105	\$ 276
Intersection and safety improvements.											
Walnut St.	US 41 to Lincoln Park Drive - Phase 1		PE						\$	-	\$
1700400	MTP 2045: 25-5 (Exempt)		RW						\$	-	\$
0.75 mi.	STBG-U/CMAQ		CN				\$3,599		\$	2,552	\$ 1,047
Road diet reconstruction and multimodal corridor											
Walnut St.	Lincoln Park Drive to Vann Ave. - Phase 2		PE						\$	-	\$
1801727	MTP 2045: 25-5 (Exempt)		RW				\$700		\$	560	\$ 140
0.95 mi.	STBG-U/CMAQ		CN				\$4,970		\$	3,976	\$ 994
Road diet reconstruction and multimodal corridor											
Walnut St.	Martin Luther King Jr. Blvd. to US 41 - Phase 3		PE						\$	-	\$
1801726	MTP 2045: 25-5 (Exempt)		RW				\$300		\$	240	\$ 60
1.3 mi.	STBG-U/CMAQ		CN					\$7,773	\$	6,218	\$ 1,555
Road diet reconstruction and multimodal corridor											

Sponsor: City of Evansville													
Route		Project Limits		Phase	All amounts in thousands					Planning/ Cost to Complete	Federal Share	Local Share	
Des#	Length:	Planning Reference	Map ID		2020	2021	2022	2023	2024				
Description:													
Department of Transportation & Services													
Various Locations		City of Evansville		PE						\$	-	\$	
1601824				RW						\$	-	\$	
n/a		HSIP		CN	\$829					\$	761	\$ 68	
Sign replacement program to address federal retroreflectivity requirements													
Various Locations		City of Evansville		PE	\$50					\$	-	\$ 50	
1802795				RW						\$	-	\$	
n/a		STBG-U		CN		\$497				\$	362	\$ 135	
Replace 8" signal heads with 12" signal heads in the Evansville signal system													
Green River Rd.		Bellemeade Ave. to Covert Ave.		PE	\$120					\$	-	\$ 120	
1802798				RW						\$	-	\$	
n/a		STBG-U		CN		\$1,395				\$	1,022	\$ 373	
Signal modernization on Green River Rd. and a portion of Washington Ave. (from Green River Rd. to Erle)													
Various Locations		Green River Rd. at Vogel Rd; First Ave. at Mill Rd.		PE	\$40					\$	-	\$ 40	
1802793				RW						\$	-	\$	
n/a		STBG-U		CN			\$387			\$	310	\$ 77	
Signal modernization at Green River Rd. and Vogel Rd. and at First Ave. and Mill Rd.													
Fire Department													
Various Locations		City of Evansville		PE	\$382					\$	344	\$ 38	
1801969				RW						\$	-	\$	
n/a		HSIP		CN		\$4,432				\$	3,960	\$ 472	
Signal preemption project for the signal system in the City of Evansville fire department service area.													
				PE	\$ 592	\$ -	\$ -	\$ 110	\$ -	\$	-	\$ 270	
				RW	\$ 1,000	\$ -	\$ -	\$ -	\$ 73	\$	858	\$ 215	
				CN	\$ 10,693	\$ 6,324	\$ 5,357	\$ 7,773	\$ -	\$	24,618	\$ 6,910	
				Total	\$ 12,285	\$ 6,324	\$ 5,357	\$ 7,883	\$ 73	\$	1,381	\$ 7,395	
				Federal	\$ 8,809	\$ 5,344	\$ 4,286	\$ 6,306	\$ 58	\$	1,105	\$ 25,908	
				Local	\$ 3,476	\$ 980	\$ 1,071	\$ 1,577	\$ 15	\$	276	\$ 7,395	
				check	\$ -	\$ -	\$ -	\$ -	\$ -	\$	-	\$ -	

Sponsor: Vanderburgh County										
Route Des# Length: Description:	Project Limits Planning Reference Federal Funding Source	Map ID Amendment/ Modification Date	Phase	All amounts in thousands				Planning/ Cost to Complete	Federal Share	Local Share
				2020	2021	2022	2023	2024		
Columbia St. 1592156 n/a Bridge rehabilitation	Bridge over Pigeon Creek STBG-U		PE RW CN	\$3,385					\$ - \$ - \$ 2,408	\$ - \$ - \$ 977
Franklin St. 1802048 n/a Bridge rehabilitation	Bridge over Pigeon Creek STBG-U		PE RW CN		\$50	\$1,793			\$ - \$ - \$ 1,434	\$ - \$ 50 \$ 359
Oak Hill Road 1802074 00.9 mi. Road reconstruction with bike and pedestrian accommodations.	Eastwood Dr. to Millersburg Rd. MTP 2045: 25-11 (Exempt) STBG-U		PE RW CN		\$1,300			\$6,050	\$ - \$ - \$ 4,840	\$ - \$ 1,300 \$ 1,210
Bridge Inspections Planning assistance using FTA Section 5307. n/a Inspection of all county bridges over 20 ft. in length (152) Includes Des# 1593021	Vanderburgh County STBG-B		PE RW CN	\$16	\$116	\$16			\$ 118 \$ - \$ -	\$ 30 \$ - \$ -
			PE RW CN Total Federal Local	\$ 16 \$ - \$ 3,385 \$ 3,401 \$ 2,421 \$ 980	\$ 116 \$ 1,350 \$ - \$ 1,466 \$ 93 \$ 1,373	\$ 16 \$ - \$ 1,793 \$ 1,809 \$ 1,447 \$ 362	\$ - \$ - \$ - \$ - \$ - \$ -	\$ - \$ - \$ 6,050 \$ 6,050 \$ 4,840 \$ 1,210	\$ 118 \$ - \$ 8,682 \$ 8,801 \$ 8,801	\$ 30 \$ 1,350 \$ 2,546 \$ 3,925 \$ 3,925

DRAFT

Sponsor: Warrick County										
Route Des# Length: Description:	Project Limits Planning Reference Federal Funding Source	Map ID Amendment/ Modification Date	Phase	All amounts in thousands				Planning/ Cost to Complete	Federal Share	Local Share
				2020	2021	2022	2023	2024		
Bell Road 1401384 1.8 mi. Road widening, added travel lanes, shoulders, bike and pedestrian accommodations, curb/gutter and drainage improvements	High Point Dr. to Telephone Rd. MTP 2045: 25-12 (Exempt) STBG-U		PE RW CN	\$7,775					\$ - \$ - \$ 5,600	\$ - \$ - \$ 2,175
Telephone Rd. 1802049 1.2 mi. Road widening from 2 to 3 lanes, pedestrian accommodations, and drainage improvements	Bell Rd. to Fuquay Rd. MTP 2045: 25-14 (Exempt) STBG-U		PE RW CN	\$350		\$500		\$4,150	\$ - \$ - \$ 3,320	\$ 350 \$ 500 \$ 830
Warrick SRTS 1592154 1.33 mi. Trail construction along Vann Road and Casey Road	Vann (SR 261-Casey), Casey (Oak Grove to S. of Vann) STBG -TA/CMAQ		PE RW CN	\$66	\$1,394				\$ - \$ 53 \$ 1,000	\$ - \$ 13 \$ 394
Shilo Road 1600739 0.5 mi. Bridge replacement	Bridge #113 STBG-R		PE RW CN		\$50	\$1,294			\$ - \$ 40 \$ 1,035	\$ - \$ 10 \$ 259
Bridge Inspections Various n/a Inspection of all county bridges over 20 ft. in length (115). Includes Des# 1593023	Warrick County STBG-B		PE RW CN	\$150	\$26				\$ 141 \$ - \$ -	\$ 35 \$ - \$ -
			PE RW CN Total Federal Local	\$ 500 \$ 66 \$ 7,775 \$ 8,341 \$ 5,773 \$ 2,568	\$ 26 \$ 50 \$ 1,394 \$ 1,470 \$ 1,061 \$ 409	\$ - \$ 500 \$ 1,294 \$ 1,794 \$ 1,035 \$ 759	\$ - \$ - \$ - \$ - \$ - \$ -	\$ - \$ - \$ 4,150 \$ 4,150 \$ 3,320 \$ 830	\$ 141 \$ 93 \$ 10,955 \$ 11,189 \$ 11,189	\$ 385 \$ 523 \$ 3,658 \$ 4,566 \$ 4,566

DRAFT

Sponsor: City of Boonville											
Route	Project Limits		Phase	All amounts in thousands					Planning/ Cost to Complete	Federal Share	Local Share
Des#	Planning Reference	Map ID		2020	2021	2022	2023	2024			
Length:	Federal Funding Source	Amendment/ Modification Date									
Description:											
Third St.	Sycamore St.to 460 ft. past Olive St.		PE	\$ 115	\$ 36					\$ 121	\$ 30
1600891			RW	\$ 548						\$ 438	\$ 110
0.68 mi.	STBG-R		CN			\$ 3,100				\$ 2,480	\$ 620
Road rehabilitation											
			PE	\$ 115	\$ 36	\$ -	\$ -	\$ -	\$ -	\$ 121	\$ 30
			RW	\$ 548	\$ -	\$ -	\$ -	\$ -	\$ -	\$ 438	\$ 110
			CN	\$ -	\$ -	\$ 3,100	\$ -	\$ -	\$ -	\$ 2,480	\$ 620
			Total	\$ 663	\$ 36	\$ 3,100	\$ -	\$ -	\$ -	\$ 3,039	\$ 760
			Federal	\$ 530	\$ 29	\$ 2,480	\$ -	\$ -	\$ -	\$ 3,039	
			Local	\$ 133	\$ 7	\$ 620	\$ -	\$ -	\$ -		\$ 760

DRAFT

Sponsor: Metropolitan Evansville Transit System (METS) / City of Evansville											
Project		Amendment/ Modification Date	Funding Source	All amounts in thousands					Federal Share	State Share	Local Share
Des#	Federal/State Funding Source			2020	2021	2022	2023	2024			
Description:											
Operating Assistance (5307)			Total	\$5,450	\$5,500	\$5,550	\$5,600	\$5,650	\$ 3,000	\$ 11,080	\$ 13,670
Various by FY			5307	\$600	\$600	\$600	\$600	\$600	\$ 3,000	-	-
Section 5307/PMTF (INDOT)			PMTF	\$2,212	\$2,214	\$2,216	\$2,218	\$2,220	-	\$ 11,080	-
Local			Local	\$2,638	\$2,686	\$2,734	\$2,782	\$2,830	-	-	\$ 13,670
1802815 (FY 2020)											
Capital Assistance (5307)			Total	\$2,288	\$2,338	\$2,388	\$2,438	\$2,488	\$ 7,167	\$ -	\$ 4,773
Various by FY			5307	\$1,372	\$1,403	\$1,434	\$1,464	\$1,495	\$ 7,167	\$ -	\$ -
Section 5307/5339			5339						\$ -	\$ -	\$ -
Includes preventative maintenance (PM)			Local	\$916	\$935	\$955	\$974	\$993	\$ -	\$ -	\$ 4,773
1802814 (FY 2020)											
Planning Assistance (5307)			Total	\$13	\$13	\$13	\$13	\$13	\$ 50	\$ -	\$15
Various by FY			5307	\$10	\$10	\$10	\$10	\$10	\$ 50	\$ -	\$ -
Section 5307			Local	\$3	\$3	\$3	\$3	\$3	-	\$ -	\$ 15
1802816 (FY 2020)											
Fixed Route Bus			Total	\$450	\$450	\$450	\$450	\$450	\$ 1,800	\$ -	\$ 450
Various by FY			5339						\$ -	\$ -	\$ -
Section 5339/CMAQ			CMAQ	\$360	\$360	\$360	\$360	\$360	\$ 1,800	\$ -	\$ -
Acquisition of one fixed route transit bus.			Local	\$90	\$90	\$90	\$90	\$90	\$ -	\$ -	\$ 450
1802803 (FY 2020)											
Paratransit Bus			Total	\$82	\$82	\$82	\$82	\$82	\$ 330	\$ -	\$ 80
Various by FY			5310						\$ -	\$ -	\$ -
Section 5310			CMAQ	\$66	\$66	\$66	\$66	\$66	\$ 330	\$ -	\$ -
Acquisition of one paratransit bus.			Local	\$16	\$16	\$16	\$16	\$16	\$ -	\$ -	\$ 80
1802810 (FY 2020)											
5307			\$ 1,982	\$ 2,013	\$ 2,044	\$ 2,074	\$ 2,105	\$ 2,130	\$ 10,217	\$ -	\$ -
5339			\$ -	\$ -	\$ -	\$ -	\$ -	\$ -	\$ -	\$ -	\$ -
5310			\$ -	\$ -	\$ -	\$ -	\$ -	\$ -	\$ -	\$ -	\$ -
CMAQ			\$ 426	\$ 426	\$ 426	\$ 426	\$ 426	\$ 426	\$ 2,130	\$ -	\$ -
PMTF			\$ 2,212	\$ 2,214	\$ 2,216	\$ 2,218	\$ 2,220	\$ 2,220	\$ -	\$ 11,080	\$ -
Local			\$ 3,663	\$ 3,730	\$ 3,798	\$ 3,865	\$ 3,932	\$ 3,932	\$ -	\$ -	\$ 18,988
Total			\$ 8,283	\$ 8,383	\$ 8,483	\$ 8,583	\$ 8,683	\$ 8,783	\$ 12,347	\$ 11,080	\$ 18,988
Federal			\$ 2,408	\$ 2,439	\$ 2,470	\$ 2,500	\$ 2,531	\$ 2,561	\$ 12,347		
State			\$ 2,212	\$ 2,214	\$ 2,216	\$ 2,218	\$ 2,220	\$ 2,220	\$ -	\$ 11,080	
Local			\$ 3,663	\$ 3,730	\$ 3,798	\$ 3,865	\$ 3,932	\$ 3,932	\$ -	\$ -	\$ 18,988

Sponsor: Henderson Area Rapid Transit (HART) / City of Henderson

Project Federal/State Funding Source Description:	Amendment/ Modification Date	Funding Source	All amounts in thousands					Federal Share	State Share	Local Share
			2020	2021	2022	2023	2024			
Operating Assistance (5307) Section 5307		Total	\$846	\$859	\$872	\$885	\$898	\$ 1,275	\$ -	\$ 3,085
		5307	\$245	\$250	\$255	\$260	\$265	\$ 1,275	\$ -	\$ -
		Local	\$601	\$609	\$617	\$625	\$633	\$ -	\$ -	\$ 3,085
Capital Assistance (5307/5339) Section 5307/5339/KYTC Includes preventive maintenance and ADA complimentary paratransit service a		Total	\$627	\$639	\$651	\$663	\$675	\$ 2,452	\$ 328	\$ 475
		5307	\$477	\$484	\$491	\$497	\$504	\$ 2,452	\$ -	\$ -
		5339	\$0	\$0	\$0	\$0	\$0	\$ -	\$ -	\$ -
		KYTC	\$63	\$64	\$66	\$67	\$68	\$ -	\$ 328	\$ -
		Local	\$87	\$91	\$95	\$99	\$103	\$ -	\$ -	\$475
Planning Assistance (5307) Section 5307		Total	\$13	\$13	\$13	\$13	\$13	\$ 50	\$ -	\$ 15
		5307	\$10	\$10	\$10	\$10	\$10	\$ 50	\$ -	\$ -
		Local	\$3	\$3	\$3	\$3	\$3	\$ -	\$ -	\$ 15
Fixed Route Bus Section 5339 Acquisition of fixed route transit bus(es).		Total	\$0	\$125	\$0	\$0	\$125	\$ 200	\$ 24	\$ 26
		5339	\$0	\$100	\$0	\$0	\$100	\$ 200	\$ -	\$ -
		KYTC	\$0	\$12	\$0	\$0	\$12	\$ -	\$ 24	\$ -
		Local	\$0	\$13	\$0	\$0	\$13	\$ -	\$ -	\$26
Paratransit Bus Section 5310 Acquisition of paratransit bus(es).		Total	\$70	\$0	\$0	\$70	\$0	\$ 112	\$ 14	\$ 14
		5310	\$56	\$0	\$0	\$56	\$0	\$ 112	\$ -	\$ -
		KYTC	\$7	\$0	\$0	\$7	\$0	\$ -	\$ 14	\$ -
		Local	\$7	\$0	\$0	\$7	\$0	\$ -	\$ -	\$ 14
		5307	\$ 732	\$ 744	\$ 756	\$ 767	\$ 779	\$ 3,777	\$ -	\$ -
		5339	\$ -	\$ 100	\$ -	\$ -	\$ 100	\$ 200	\$ -	\$ -
Total		5310	\$ 56	\$ -	\$ -	\$ 56	\$ -	\$ 112	\$ -	\$ -
		KYTC	\$ 70	\$ 76	\$ 66	\$ 74	\$ 80	\$ -	\$ 366	\$ -
		Local	\$ 698	\$ 716	\$ 715	\$ 734	\$ 752	\$ -	\$ -	\$ 3,615
		Total	\$ 1,556	\$ 1,636	\$ 1,536	\$ 1,631	\$ 1,711	\$ 4,089	\$ 366	\$ 3,615
Federal State Local		Federal	\$ 788	\$ 844	\$ 756	\$ 823	\$ 879	\$ 4,089	\$ -	\$ -
		State	\$ 70	\$ 76	\$ 66	\$ 74	\$ 80	\$ -	\$ 366	\$ -
		Local	\$ 698	\$ 716	\$ 715	\$ 734	\$ 752	\$ -	\$ -	\$ 3,615

DRAFT

Sponsor: Evansville MPO / Non-Profit Organizations										
Project Des# Federal Funding Source Description:	Amendment/ Modification Date	Funding Source	All amounts in thousands					Federal Share	State Share	Local Share
			2020	2021	2022	2023	2024			
Capital Assistance (5310)		Total	\$125	\$125	\$125	\$125	\$125	\$ 500	\$ -	\$ 125
Various		5310	\$100	\$100	\$100	\$100	\$100	\$ 500	\$ -	\$ -
Section 5310		Local	\$25	\$25	\$25	\$25	\$25	\$ -	\$ -	\$ 125
Acquisition of paratransit bus(es) or van(s).										
Planning Assistance (5310)		Total	\$22	\$22	\$23	\$23	\$24	\$ 114	\$ -	\$ -
Various		5310	\$22	\$22	\$23	\$23	\$24	\$ 114	\$ -	\$ -
Section 5310		Local	\$0	\$0	\$0	\$0	\$0	\$ -	\$ -	\$ -
Administration of 5310 program: includes solicitation of projects and activities as described in the EMPO UPWP.										
5310		5310	\$ 122	\$ 122	\$ 123	\$ 123	\$ 124	\$ 614	\$ -	\$ -
Local		Local	\$ 25	\$ 25	\$ 25	\$ 25	\$ 25	\$ -	\$ -	\$ 125
Total		Total	\$ 147	\$ 147	\$ 148	\$ 148	\$ 149	\$ 614	\$ -	\$ 125
Federal		Federal	\$ 122	\$ 122	\$ 123	\$ 123	\$ 124	\$ 614	\$ -	\$ 125
State		State	\$ -	\$ -	\$ -	\$ -	\$ -	\$ -	\$ -	\$ -
Local		Local	\$ 25	\$ 25	\$ 25	\$ 25	\$ 25	\$ -	\$ -	\$ 125

Sponsor: Kentucky Transportation Cabinet										
Route Item# Length: Description:	Project Limits Planning Reference Federal Funding Source	Map ID Amendment/ Modification Date	Phase	All amounts in thousands				Planning/ Cost to Complete	Federal Share	State Share
				2020	2021	2022	2023	2024		
US 60 02-1080 n/a	Over Green River at intersection with KY 1078 MTP 2040: 22-22 (Exempt) STBG-B		PE RW U CN						\$ - \$ - \$ - \$ -	\$ - \$ - \$ - \$ 2,280
Bridge replacement over Green River. Note: A soft match will be provided with KY toll credits										
US 60 02-1080.01 n/a	Over Green River at intersection with KY 1078 MTP 2040: 22-22 (Exempt) STBG-B		PE RW U CN						\$ - \$ - \$ - \$ -	\$ - \$ - \$ - \$ 2,280
Bridge replacement over Green River. Note: A soft match will be provided with KY toll credits										
US 60 02-1080.02 n/a	Over Green River at intersection with KY 1078 MTP 2040: 22-22 (Exempt) STBG-B		PE RW U CN						\$ - \$ - \$ - \$ -	\$ - \$ - \$ - \$ 1,900
Bridge replacement over Green River. Note: A soft match will be provided with KY toll credits										
US 41 02-2091.1 n/a	Bridge over the Ohio River STBG-B		PE RW U CN			\$21,200			\$ - \$ - \$ - \$ -	\$ - \$ - \$ - \$ 8,056
Address deficiencies and bridge painting. Joint project with INDOT.										
I 69 02-20023 7 mi.	From milepoint 142.146 to 148.09 NHPP		PE RW U CN		\$640				\$ 512 \$ - \$ - \$ -	\$ 128 \$ - \$ - \$ 1,280
Address pavement condition										
Grouped Projects Various locations										
Various Various: See grouped projects summary at the end of all project listings.										
			PE	\$ -	\$ 640	\$ -	\$ -	\$ -	\$ -	\$ 128
			RW	\$ -	\$ -	\$ -	\$ -	\$ -	\$ -	\$ -
			U	\$ -	\$ -	\$ -	\$ -	\$ -	\$ -	\$ -
			CN	\$ 17,000	\$ 6,400	\$ 21,200	\$ -	\$ -	\$ -	\$ 15,796
			Total	\$ 17,000	\$ 7,040	\$ 21,200	\$ -	\$ -	\$ 28,804	\$ 15,924
			Federal	\$ 10,540	\$ 5,632	\$ 13,144	\$ -	\$ -	\$ 29,316	\$ 15,924
			State	\$ 6,460	\$ 1,408	\$ 8,056	\$ -	\$ -	\$ -	\$ -

DRAFT

Sponsor: City of Henderson										
Route Item# Length: Description:	Project Limits Planning Reference Federal Funding Source	Map ID Amendment/ Modification Date	Phase	All amounts in thousands				Planning/ Cost to Complete	Federal Share	Local Share
				2020	2021	2022	2023	2024		
Wathen Lane	US 60 to city limits		PE						\$ -	\$ -
02-382	MTP 2045: 25-16 (Exempt)		RW		\$750				\$ 600	\$ 150
1.42 mi.	SHN		U						\$ -	\$ -
			CN			\$3,300			\$ 2,640	\$ 660
Upgrade project by widening lanes, adding curb, gutter and sidewalk.										
Green River Road	Bend Gate Road to Osage Drive		PE						\$ -	\$ -
02-321			RW						\$ -	\$ -
0.45 mi.	TA		U						\$ -	\$ -
			CN	\$240					\$ 188	\$ 52
Sidewalk construction										
KYTC Sponsored projects using SHN funds										
Various by FY	Intersection with KY 812		PE						\$ -	\$ -
02-711.00			RW	\$20					\$ 20	\$ -
n/a	SHN		U	\$100					\$ 100	\$ -
			CN	\$950					\$ 950	\$ -
Intersection upgrade. Add dedicated right and left turn lanes and signal updates. Note: A soft match will be provided with KY toll credits										
KY 2183	Intersection with KY 1539 (MP 1.693-1.793)		PE						\$ -	\$ -
02-714.00			RW			\$150			\$ 150	\$ -
0.10 mi.	SHN		U			\$400			\$ 400	\$ -
			CN				\$600		\$ 600	\$ -
Intersection project to improve safety. Note: A soft match will be provided with KY toll credits										

KYTC Sponsored projects using SHN funds											
Acquisition of one paratransit bus.			Phase	All amounts in thousands					Planning/ Cost to Complete	Federal Share	Local Share
1802810 (FY 2020)	Planning Reference	Map ID Amendment/ Modification Date		2020	2021	2022	2023	2024			
Description:											
US 41	Intersection with Wolf Hills Road		PE							\$ -	\$ -
02-715.00			RW					\$50		\$ 50	\$ -
n/a	SHN		U						\$100	\$ 100	\$ -
			CN						\$500	\$ 500	\$ -
Intersection project to improve safety. Note: A soft match will be provided with KY toll credits											
			PE	\$ -	\$ -	\$ -	\$ -	\$ -	\$ -	\$ -	\$ -
			RW	\$ 20	\$ 750	\$ 150	\$ -	\$ 50	\$ -	\$ 820	\$ 150
			U	\$ 100	\$ -	\$ 400	\$ -	\$ -	\$ 100	\$ 600	\$ -
			CN	\$ 1,190	\$ -	\$ 3,300	\$ 600	\$ -	\$ 500	\$ 4,878	\$ 712
			Total	\$ 1,310	\$ 750	\$ 3,850	\$ 600	\$ 50	\$ 600	\$ 6,298	\$ 862
			Federal	\$ 1,258	\$ 600	\$ 3,190	\$ 600	\$ 50	\$ 600	\$ 6,298	
			Local	\$ 52	\$ 150	\$ 660	\$ -	\$ -	\$ -		\$ 862